

JUN 11

Vol 14

Issue 2

# West Hartford LIFE

www.MyWestHartfordLIFE.com



👉 Helene Kvale is directing "Hunger" through Bated Breath Theatre. See page 12. Lisa Brisson photos

👉 Dougie and Tom Trumble help make Conard High School's energy project a reality. See page 16.



## In Focus 3

Officers at schools  
Now bringing new lessons to the classroom.

## Community 20

Come on down to Celebrate! West Hartford

|               |    |               |    |
|---------------|----|---------------|----|
| Soup Box      | 4  | Spotlight     | 50 |
| Roundup       | 4  | Faith         | 52 |
| Home & Garden | 35 | Calendar      | 60 |
| Medical LIFE  | 47 | Photo Roundup | 67 |

## Conard/16

"It's near the football field, so everyone including the public that comes here can see and learn," Mr. Truss said. "This will impact the entire school and is already being incorporated into all of Conard's curriculum."

That includes such classes as architecture, engineering design, technology, web design, graphics, automotive technology, power energy, transportation, science and environmental studies and more.

The geothermal aspect of the exhibit will show how the energy process works by showing students how "56 degrees transfers through sidewalks (from the new building ) by melting snow," Mr. Truss said, which he will use for experiments to show cause and effect.

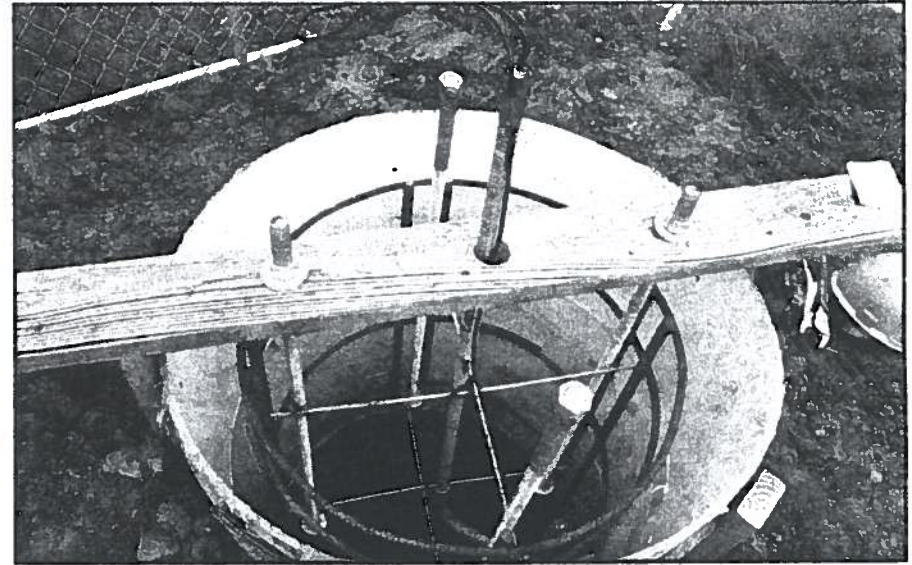
"Students will see the connections and not just by talking about it. It shows how geothermal works and it will also show how BTU consumption works."

The 40-foot wind spire is propeller free, with a vertical axis design that helps create a silent and maximizing consumption of energy conversion from wind into power, regardless of any wind speed or direction.

Solar panels placed on top of the roof will create electricity, but an added perk was donated by the state-based company OPEL, now an official sponsor of the energy lab.

It not only donated the nine solar panels, it also

*Construction is starting  
at the Conard High  
School energy lab.*  
Photos by Lisa Brisson



provided its signature "East/West GPS technology," according to Mr. Truss, that monitors and collects data and compiles statistics. The cost of the panels and technology was about \$7,000.

Conard's winning proposal was such an exciting project for some that the funding component grew legs.

Karen Wizevich, a foundation board member, works with museums to develop interpretive panels

and signs and she is working with the graphics design students to provide panels for the lab.

Dougie Trumbull, who co-established the foundation and has been off the board for four years, was surprised when her family not only decided to fund the project, but do it in her name.

"I knew that the project was chosen because I stay in touch with what is going on with the foundation and I knew that this was a very selective process," she



*The gang's all here: foundation board members, teachers and students gather to check out the starting construction of Conard High School's new energy lab and display.*

said. "I did not know that my family stepped in to meet the challenge."

Kay and Dave Dupee, her mother and father, were supportive of the foundation when she started it.

"My parents consulted and contributed to it financially over the years. They have always liked to support what my siblings were involved in," Ms. Trumbull said.

Her father is gone now, "but my mother lives in Florida, but she gets everything from the foundation and when she read an article about the grant, she was very excited the project," she added.

"She called my husband to do something about it and the two of them are dangerous collaborators. They made it a present for my birthday. It was a lovely surprise," she said.

"I met the teachers and the students involved and I'm so impressed by the attentiveness to this project. Hopefully it will be something the school and the community at large can observe and contribute to in the future." ■■■

Contact the Foundation for West Hartford Public Schools at [fwhps.org](http://fwhps.org).